

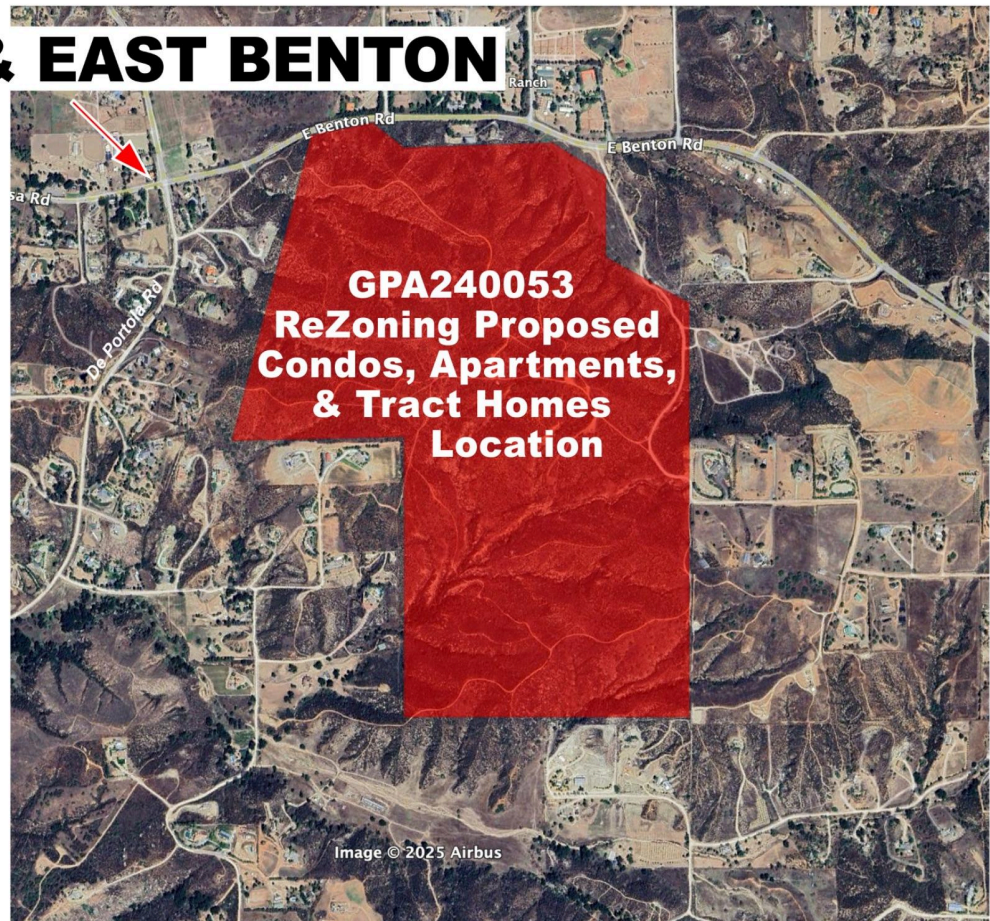
# Apartments/Condos!



**NoRezoning.info**

Don't Let them destroy our rural lifestyle

## **MESA & EAST BENTON**



**410 Acres of Apartments/Condos in our backyards**

**Attention Community! There's a significant threat to our neighborhood with plans for a new high-density development (Apartments, Condos and Tract Homes) near De Portola and Mesa Rd, this would potentially bring up to 4000 new residents**

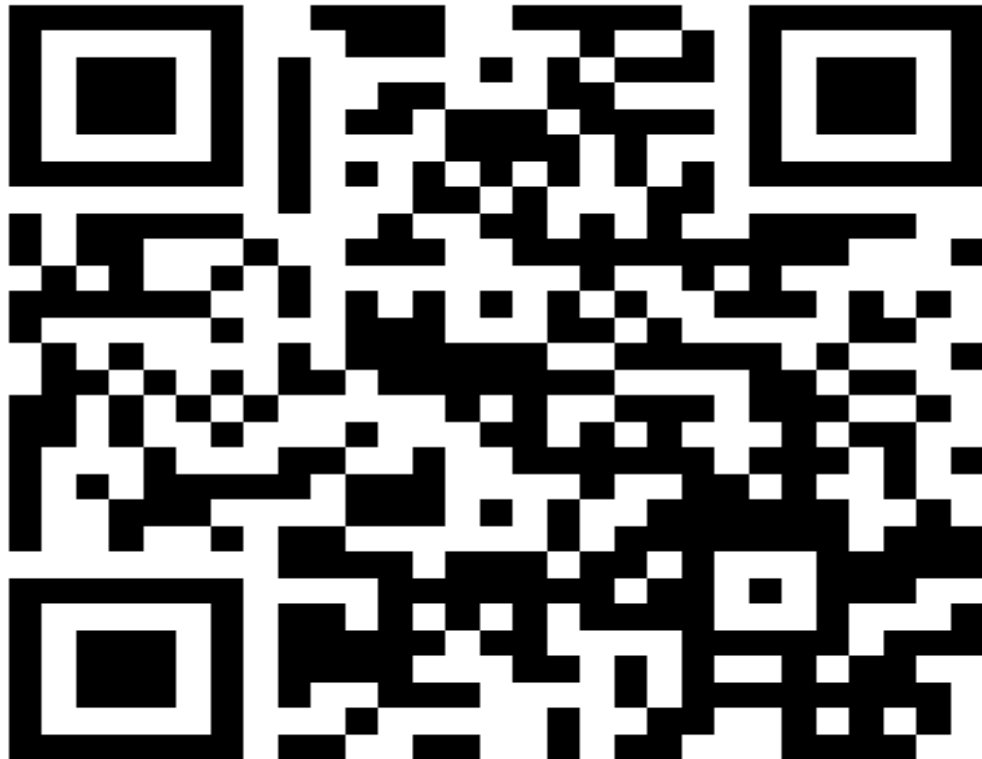
See back for more information

# Apartments/Condos!

to our rural area. This project involves approximately 410 acres that could change zoning in our area, impacting access from Mesa East Benton, and De Portola. We need your voices to be heard at crucial meetings in Riverside (NoRezoning.info has meeting dates and times). Please join us, share with your neighbors, and subscribe to the Newsletter.

We need our community to come together to fight this ReZoning

**Subscribe to the Newsletter to keep updated on current information  
at [www.NoRezoning.info](http://www.NoRezoning.info)**



[www.NoRezoning.info](http://www.NoRezoning.info)